

EZ-AUTOMATION – INCREASE EFFICIENCY AND PRODUCTIVITY

Imagine an operation that effortlessly maximizes spindle time and enhances machine efficiency – that’s what Lyndex-Nikken’s EZ-Automation can help you do. Our modular and scalable products are crafted with simplicity in mind, ensuring a stress-free entry into Industry 5.0 and smart factory capabilities. We get it – the challenges you face are real, and our mission is to simplify your journey towards unattended lights-out machining without requiring a high skill level in robotics or automation.

It’s not just about automation; it’s about making your job easier. Our user-friendly approach means you can

seamlessly integrate and navigate our products, all while keeping costs in check. Whether you’re aiming for lights-out machining or analyzing machine data for process improvement, Lyndex-Nikken is here to support you – and you don’t need to be a tech whiz to make it happen.

Let’s make your machine shop thrive with streamlined operations, improved processes, and a bottom line that reflects your success. Lyndex-Nikken is your partner in progress and we’re here to make automation work for you - no advanced robotics degree required.

Additional EZ-Automation Products Include:



EZ-AUTOCART

Easily automate machine tending with minimal effort



EZ-TEND™

Non-intimidating industrial robotic machine tending platform

EZ-SMARTTOWER



INCREASE MACHINE SHOP EFFICIENCY WITH MACHINE TRACKING SYSTEM

The new **EZ-SmartTower** is designed to streamline ROI analysis



lyndexnikken.com



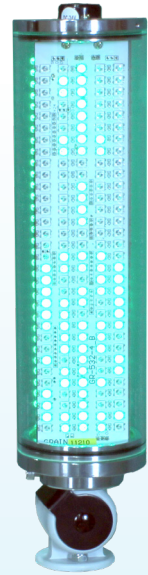
1468 Armour Boulevard | Mundelein, IL 60060
 Phone: 847.367.4800 | Fax: 847.367.4815 | sales@lyndexnikken.com
 lyndexnikken.com



LN191_CA_v2

MACHINE TRACKING AND BOTTLENECK ANALYSIS AT YOUR FINGERTIPS

In today's machine shop, where there is fierce competition for skilled workers and variable costs pose constant challenges, the solution to thriving lies in embracing automation. With over 45 years of trust on machine shop floors providing quality tooling, rotary tables, presetters, and machine tool accessories, Lyndex-Nikken now offers an EZ-Automation product line that is designed to give you a competitive edge, and you don't need to be an automation expert to reap its benefits.



EZ-SmartTower Includes:

- EZ-SmartTower unit
- Intuitive graphical App
- App empowers user analysis

Harness the Power of Machine Data

Embark on a new era of automation with Lyndex-Nikken's innovative EZ-SmartTower machine tracking solution that is easy to install on CNC lathes, mills, and similar machines.

This cutting-edge technology empowers machine shops to automate the production data (i.e. uptime, idle time, error time, alarms, part making, operators) collection, enabling data analysis to identify bottlenecks, make improvements, increase spindle time, and enhance overall machine efficiency. Embrace modern technology and the seamless integration of automation into your manufacturing process.

Increase Machine Shop Efficiency

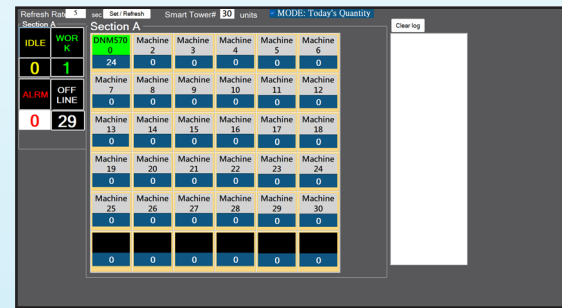
The EZ-SmartTower is a modular, easy to use, and cost-effective automation solution that is scalable across all machines in your shop. It enables stress-free entry into Industry 4.0/5.0 or being a smart factory that helps you analyze your machine ROI. The EZ-SmartTower not only provides comprehensive data tracking for machine performance but also offers real-time insights, enabling businesses to optimize processes, track employee contributions, and boost overall operational efficiency. Using the EZ-SmartTower can provide:

- Enhance overall shop efficiency by minimizing downtime and maximizing machine utilization
- Cost effective measurement of machine throughput by analysis of operator and machine performance
- Machine data to facilitate in-depth analysis for process optimization and bottleneck identification
- Visual feedback to empower operators to stay informed, enhancing workflow efficiency
- Provides data for employee incentives based on performance
- Real-time status of machines allowing for on-the-fly decision making



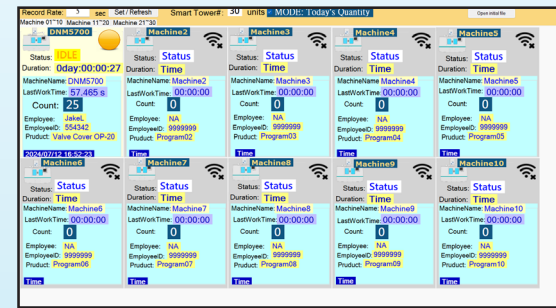
Home Screen

Intuitive hub to access data analytics



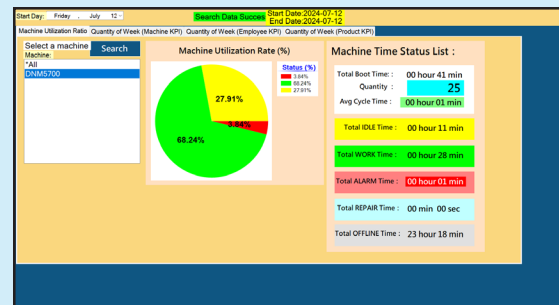
Machine Map

Live status of machine



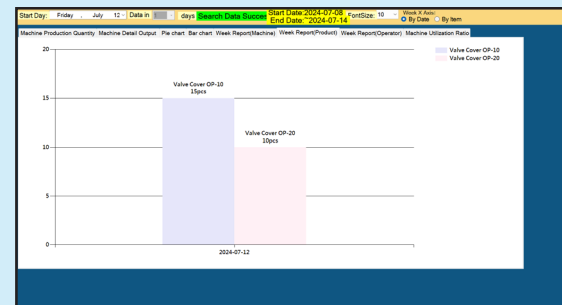
Tower Detail

Monitor and track shop floor



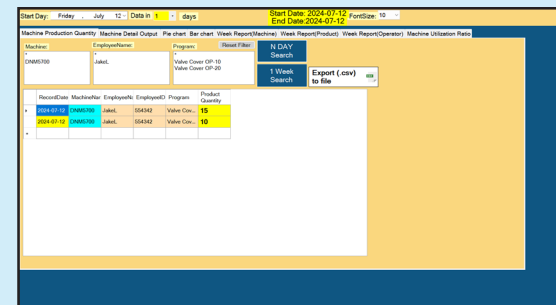
Machine Utilization

Machine utilization rate and tracks idle work and alarm time



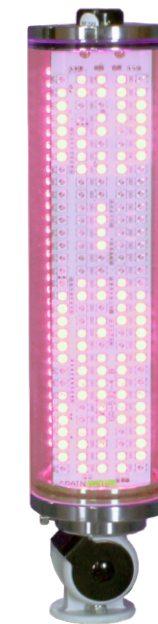
Throughput Tracking

Efficiency tracking for machine, employee, and part



Day Report

Employee and machine productivity for the day



EZ-SMART TOWER FEATURES

The capabilities of the EZ-SmartTower include:

- Accurately logs machine cycle counts
- Records idle, cycle, and error times for spindle efficacy tracking
- Logs data for analytics with details such as operator name, machine name, and part name
- LED light indicates machine status while displaying current cycle time or idle time
- WiFi enables data to transfer in real time
- Included Apps allows data collection of all machine tools
- Data output in charts or Excel spreadsheet can be refined with filter criteria for daily or weekly analysis